

The Monticello



Elevation 5

w/ optional Stone and Shake Front, Stone Stoop and Living Room Fireplace



www.craftmarkhomes.com



Elevation 1
w/ optional Brick Front, Hip Roof, Brick Stoop, Living Room Fireplace
and Family Room Fireplace

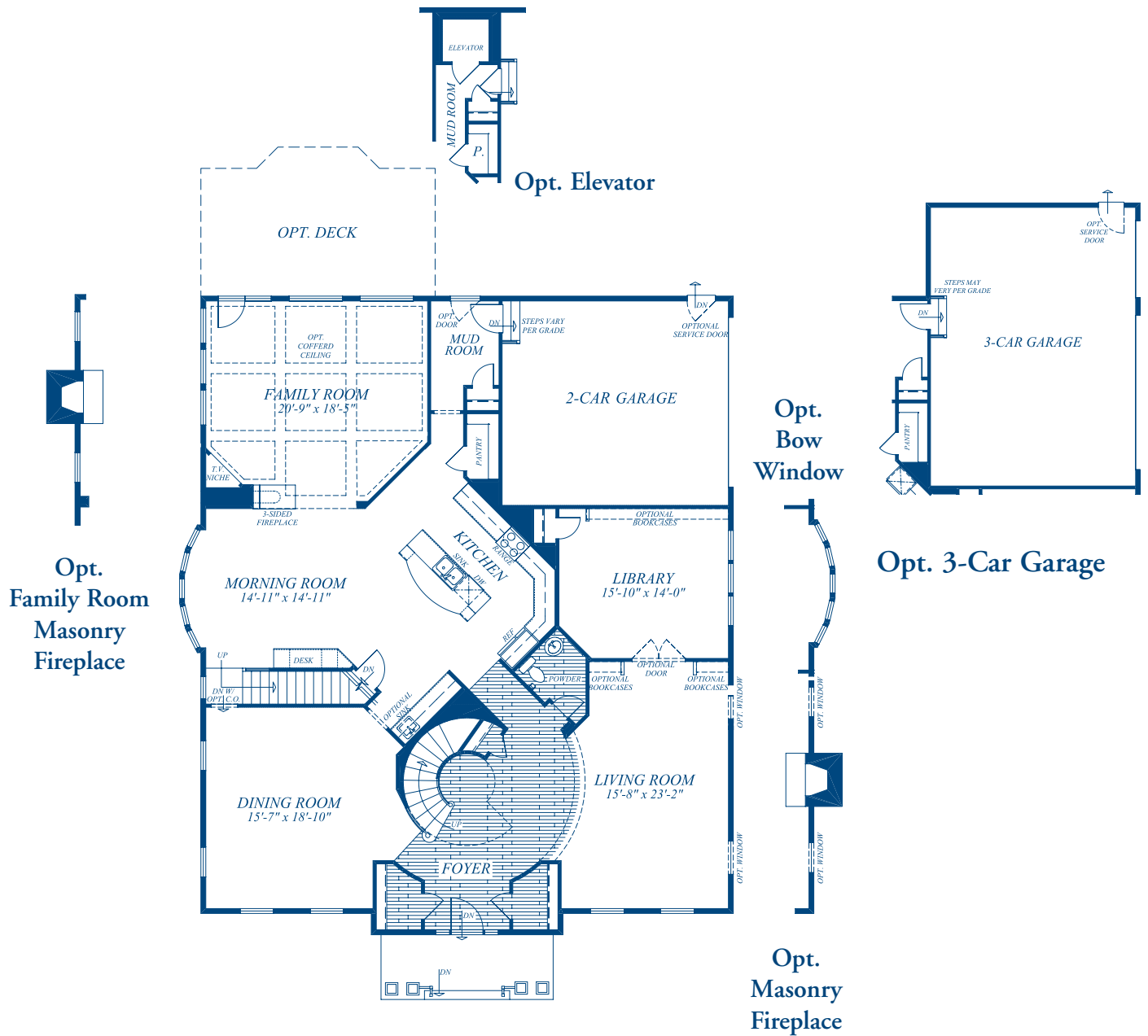


Elevation 2
w/ optional Stone Front and Stone Stoop

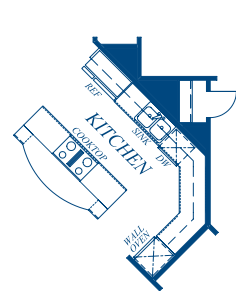


Elevation 3
w/ optional Stone to Grade, Stone Stoop and Living Room Fireplace

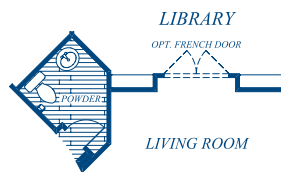
All artist's renderings are concepts and subject to change without notice.
"We are pledged to the letter and spirit of U.S. policy for the achievement of equal housing opportunity throughout the Nation. We encourage and support an affirmative advertising and marketing program in which there are not barriers to obtaining housing because of race, color, sex, handicap, familial status, or national origin"



First Floor Plan

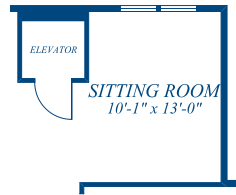


Opt. Gourmet Kitchen

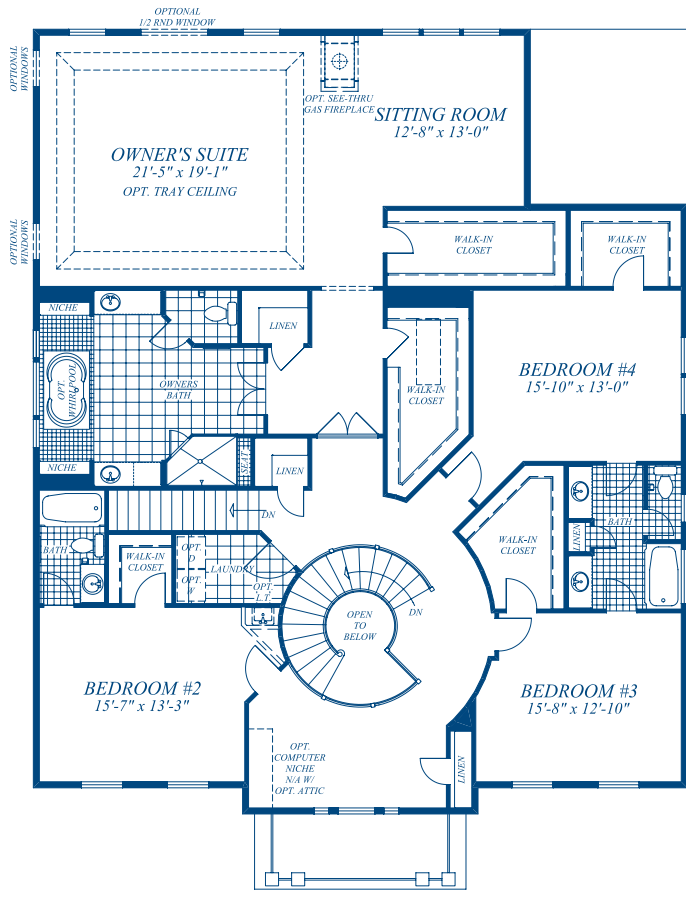


Opt. Library Bookcases

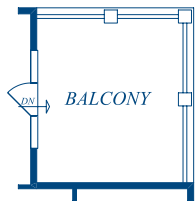
All floor plans and elevations are approximate and subject to change without notice. Room sizes and window configurations may vary with elevation. All dimensions noted represent widest point of room. Doors are not to scale and do not reflect actual door sizes.



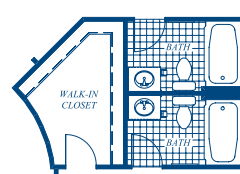
Opt. Elevator



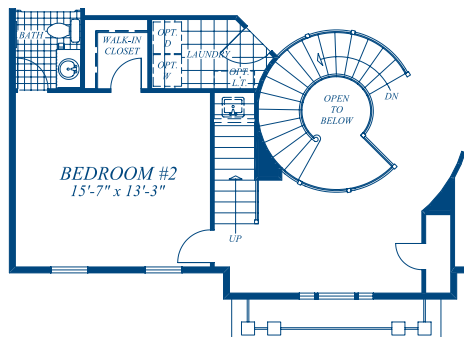
Second Floor Plan



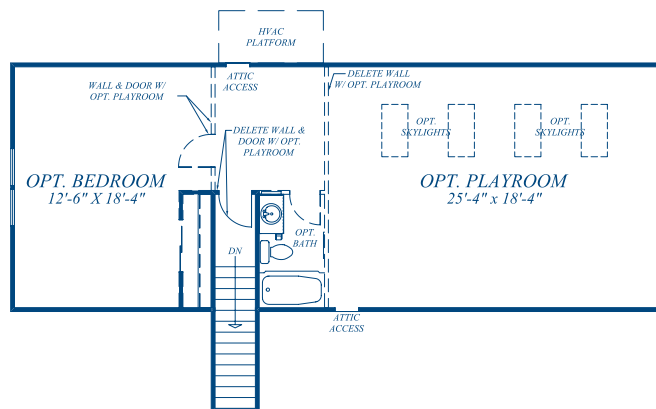
Opt. Balcony



Opt. Individual Bath Layout



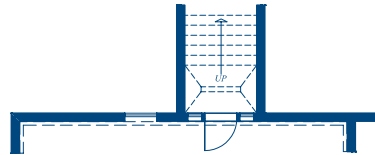
Stairs to Opt. Attic



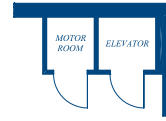
Opt. Attic Floor



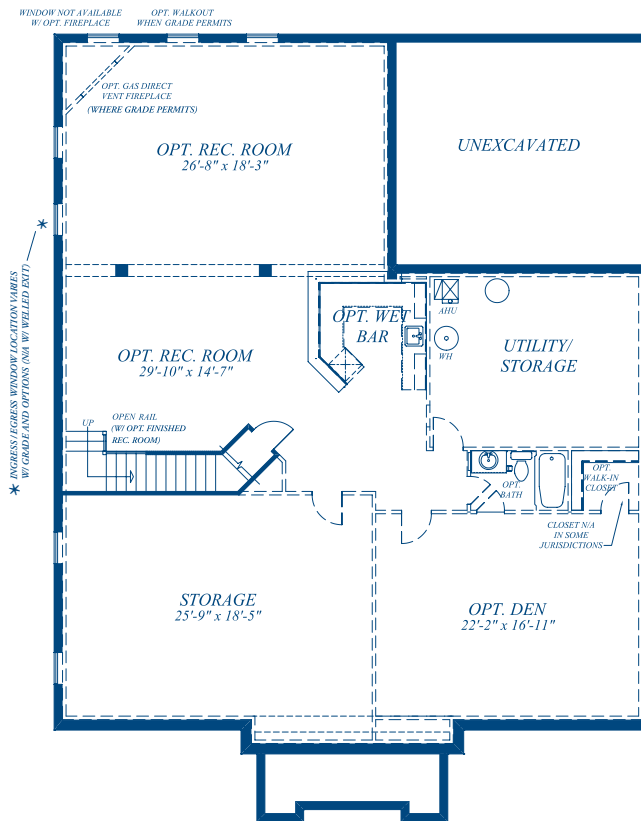
Opt. Welled Exit



Alt. Opt. Welled Exit



Opt. Elevator



Basement Plan

All floor plans and elevations are approximate and subject to change without notice. Room sizes and window configurations may vary with elevation. All dimensions noted represent widest point of room. Doors are not to scale and do not reflect actual door sizes.