

THE **Westmore** with 8 Foot Extension

3-5 BR | 2-4 Full BA | 1-2 Half BA | 2-Car Garage

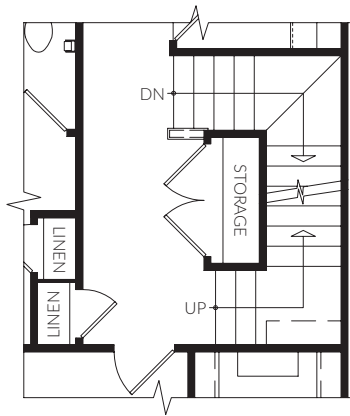
the **GROVE**

CRAFTMARK  
HOMES®



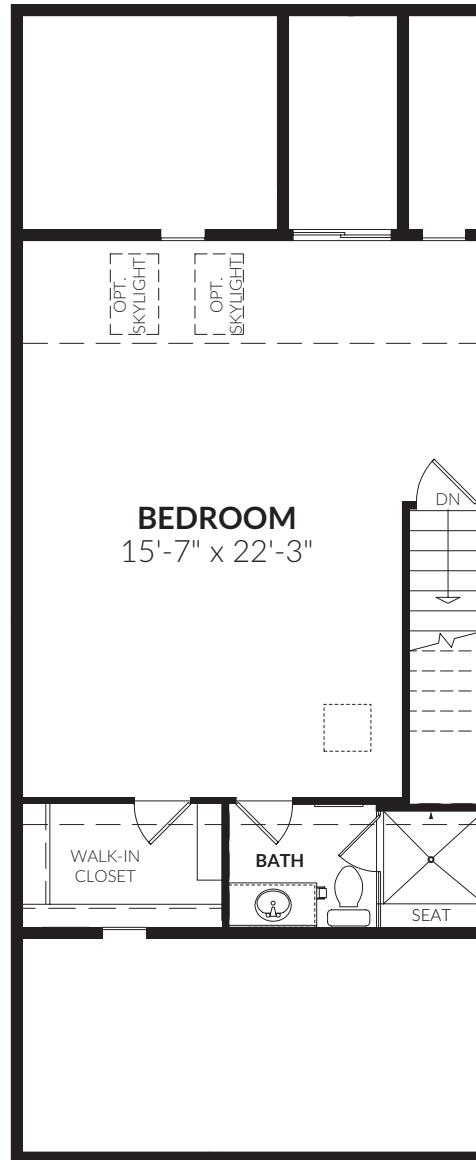


## Third Floor

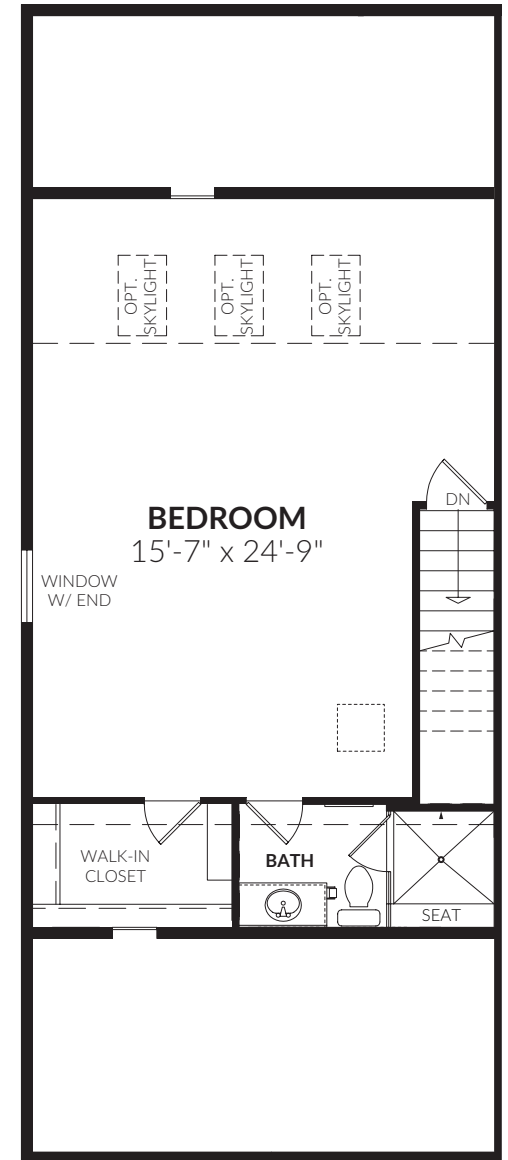


STAIRS TO OPT. LOFT

## Opt. Loft



OPT. LOFT FLOOR

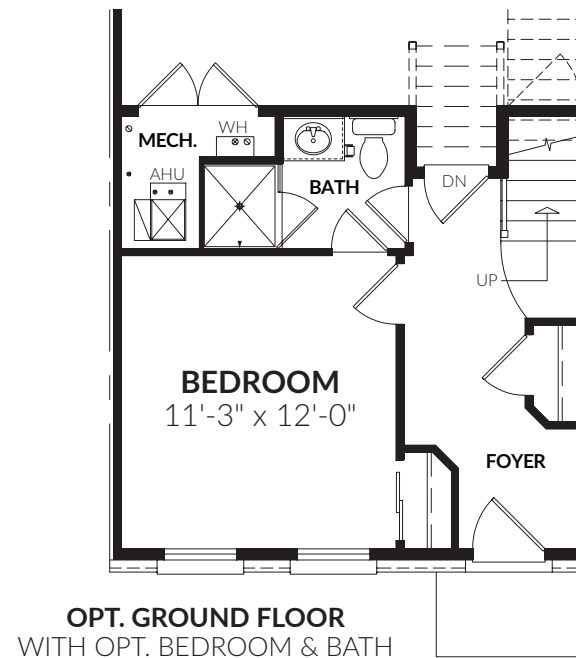
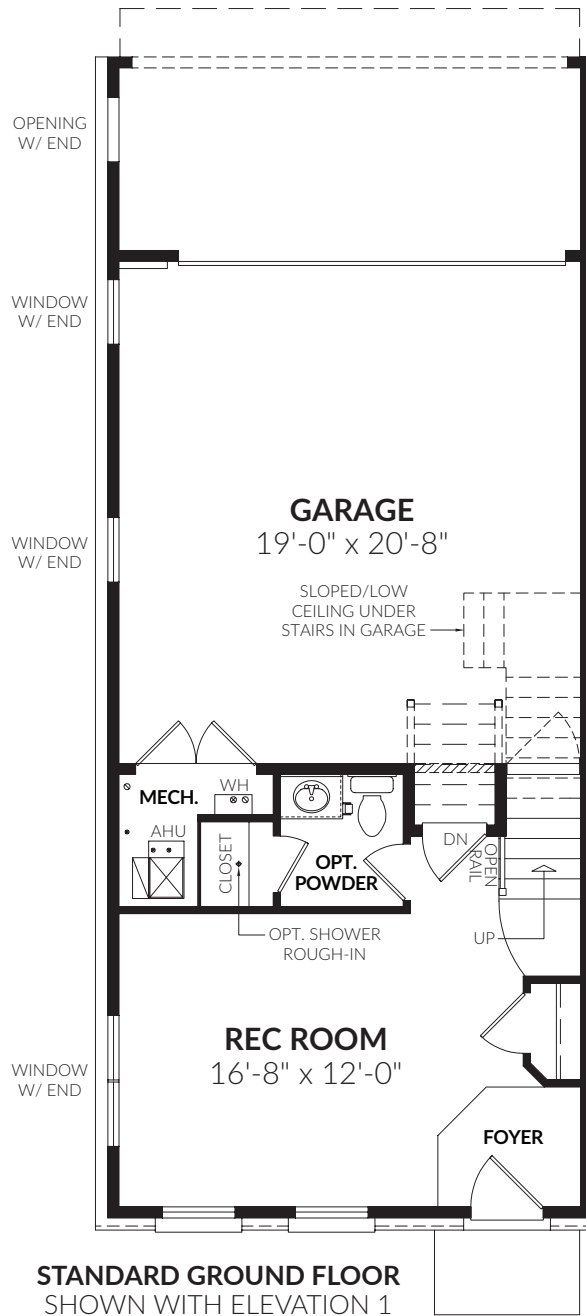


OPT. LOFT FLOOR  
WITH END CONDITION

[CraftmarkHomes.com/TheGrove](https://www.craftmarkhomes.com/TheGrove)

All artist's renderings are concepts, may show optional features and are subject to change without notice. Ask Sales Manager for details. All floor plans and elevations are approximate and subject to change without notice. Room sizes and window configurations may vary with elevation. All dimensions noted represent widest point of room. Doors are not to scale and do not reflect actual door sizes.

## Ground Floor



All artist's renderings are concepts, may show optional features and are subject to change without notice. Ask Sales Manager for details. All floor plans and elevations are approximate and subject to change without notice. Room sizes and window configurations may vary with elevation. All dimensions noted represent widest point of room. Doors are not to scale and do not reflect actual door sizes. \*Loft bedrooms/baths are subject to availability set by jurisdictions.

the **GROVE**

**CRAFTMARK HOMES**<sup>®</sup>